

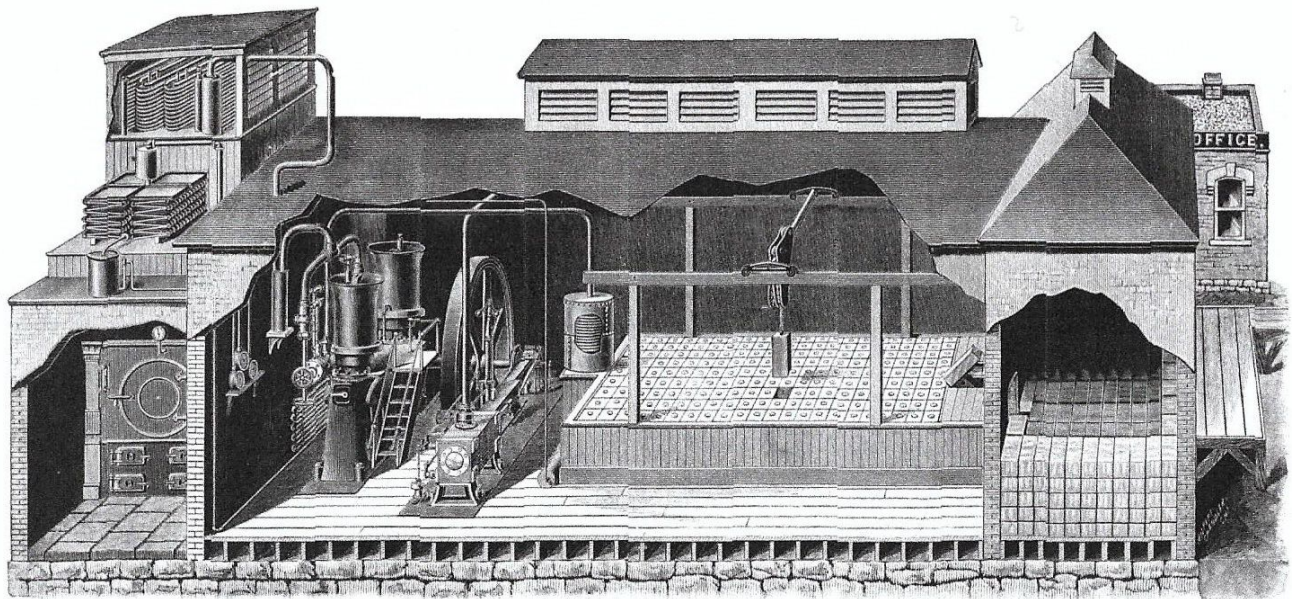
Refrigeration in American Breweries 1860-1920

Ice & Refrigeration Advertisements

HERCULES ICE AND REFRIGERATING MACHINE

(REFRIGERANT: ANHYDROUS AMMONIA.)

For Breweries, Packing Houses, Cold Storage,



A MODEL ICE PLANT.

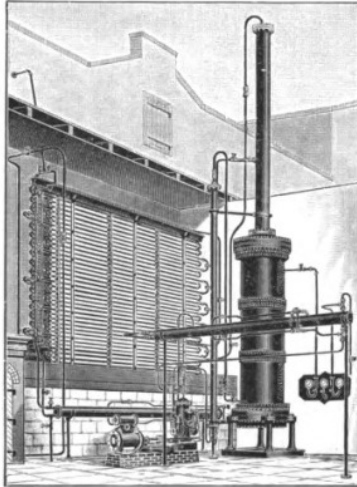
ARTIFICIAL ICE PLANTS

From ICE AND REFRIGERATION 1891

PENNSYLVANIA IRON WORKS COMPANY,
MANUFACTURERS OF RANKIN . . .

Ice and Refrigerating Machine

EMBODYING THE LATEST IMPROVEMENTS IN ABSORPTION MACHINES.



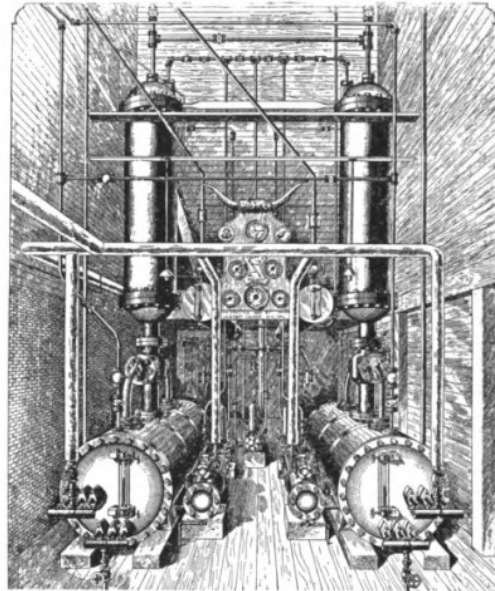
Ice Machine References

- W. H. RAGAN, Thibodaux, La.
 - HENRY COOK, Donaldville, La.
 - GEO. & J. G. MUEHLBACH, Kansas City, Mo.
 - LAUER BREWING CO., Reading, Pa.
 - STIGMAIER & SOX, Wilkes Barre, Pa.
 - J. H. WICHENER & CO., Philadelphia, Pa.
 - EDSON BROS, Cold Storage, Philadelphia, Pa.
 - "GLADSTONE" APARTMENTS, Philadelphia, Pa.
 - THOS. BRADLEY, Cold Storage, Philadelphia, Pa.
 - FRAISSI & BLUM, Ice Manuf'rs, Houma, La.
- AND MANY OTHERS.

Ice and Refrigerating Machines

FOR ICE-MAKING PLANTS

Brewers, Pork Packers, Oil Refiners, Cold Air Store Houses, and all Purposes where a low degree of temperature is required.



Builder of Machinery for Packers, Butchers, and Produce Dealers.

Dealer in Engines, Boilers, Pumps and Steam Specialties.

BUILDERS OF LATEST IMPROVED GREENE ENGINE

Office and Works, 50th Street and Merion Avenue,
PHILADELPHIA, PA.

ENGINEER AND CONTRACTOR

Descriptive Circulars, References, Detailed Estimates and Information furnished on Application

JAMES B. GRAFT,

74 CORTLANDT ST.
NEW YORK.

BUFFALO REFRIGERATING MACHINE CO.

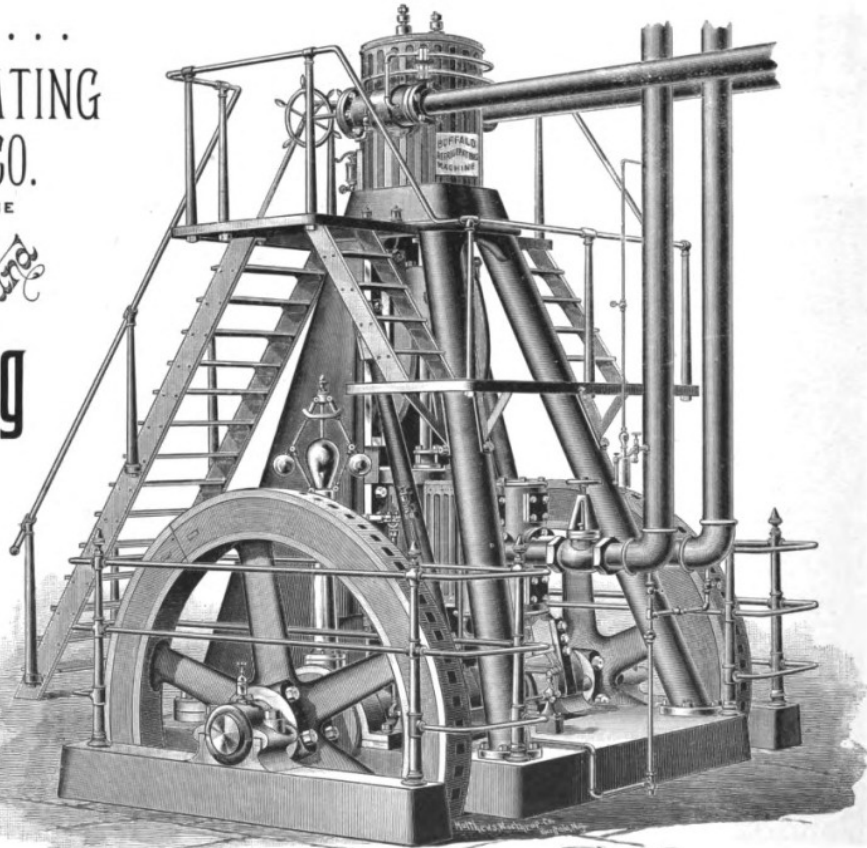
BUILDERS OF THE

Buffalo Ice and Refrigerating MACHINE

For Ice Making and Artificial Refrigerating

Full particulars, Estimates, Illustrated Circular, containing list of machines in use, etc., furnished upon application.

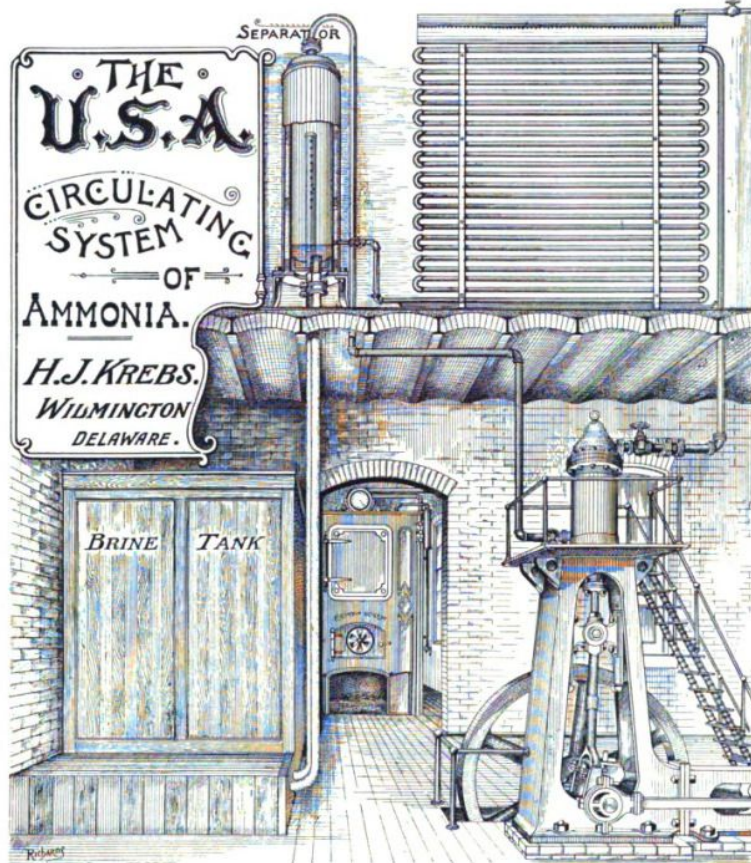
Buffalo, N. Y.



H. J. KREBS' U. S. A. Circulating System of Ammonia

PATENTED SEPTEMBER 9th, 1890.

THE results achieved by this system, both for brine cooling and ice making, are unexcelled. It ensures dry gas to the pump and abundance of feed to the expansion pipes, therefore economy in piping, economy in ammonia and economy in space. It is simple and easily operated and saves time, money and worry. You cannot afford to do without it.



In Ordering Machines Specify the
U.S.A.
CIRCULATING SYSTEM.

DURING LAST YEAR IT WAS INTRODUCED WITH GREAT SUCCESS IN THE FOLLOWING ESTABLISHMENTS:

- Charles W. Street, Packing House, Baltimore, Md.
- Washington Abattoir Co., - - - - - Bennings, D. C.
- New Abattoir, Philadelphia Stock Yards, Philadelphia, Pa.
- Wilmington Abattoir and Cold Storage Co., Wilmington, Del.
- J. P. Bell & Sons, Ice Factory, - - - - - Norfolk, Va.

These Plants were Erected by Mr. J. C. Mustard, of 1818 N. 17th St., Philadelphia, Pa.

WRITE FOR PARTICULARS TO
H. J. KREBS,
MANUFACTURER,
WILMINGTON, DELAWARE.

J. C. MUSTARD, 1818 North 17th Street, Philadelphia, Pa.
BUILDER OF
ICE MAKING & REFRIGERATING MACHINES

DURING LAST YEAR I HAVE ERECTED THE FOLLOWING PLANTS:

REFRIGERATING MACHINES

- | | | | |
|--|-------------------|---|-------------------|
| N. Autle, Pork Packer, - - - - - | Washington, D. C. | Big Elk Dairy, - - - - - | Oxford, Pa. |
| C. Spuck, Sausage Maker, - - - - - | Baltimore, Md. | West Chester Dairy, - - - - - | West Chester, Pa. |
| David Eichner, Pork Packer, - - - - - | Baltimore, Md. | Chas. W. Street, Packing House, - - - - - | Baltimore, Md. |
| J. F. C. Hansen, Pork Packer, - - - - - | Baltimore, Md. | Washington Abattoir Co., - - - - - | Bennings, D. C. |
| Jose. J. Martin, Brandywine Dairies, - - - - - | Crossart, Pa. | Wilmington Abattoir and Cold Storage Co., - - - - - | Wilmington, Del. |
| R. W. Downing, Wallingford Dairy, - - - - - | Wallingford, Pa. | New Abattoir, Philadelphia Stock Yards, - - - - - | Philadelphia, Pa. |
| H. B. & E. A. Pugh, Dairy, - - - - - | Oxford, Pa. | | |

ICE PLANTS

- | | | | |
|---|--------------|----------------------------|--------------|
| J. S. Bell & Sons, Ice Factory, - - - - - | Norfolk, Va. | Suffolk Ice Co., - - - - - | Suffolk, Va. |
|---|--------------|----------------------------|--------------|

The last named plant I am now about starting, having changed it from absorption to compression. A number of above plants are fitted with the U. S. A. Circulating System, which for efficiency, economy, and simplicity can not be surpassed. My long experience in the ice and refrigerating trade enables me to select the best, and I take especial pride in furnishing high grade machinery at moderate cost.



J. G. MUSTARD,
1818 North 17th St., Philadelphia, Pa.

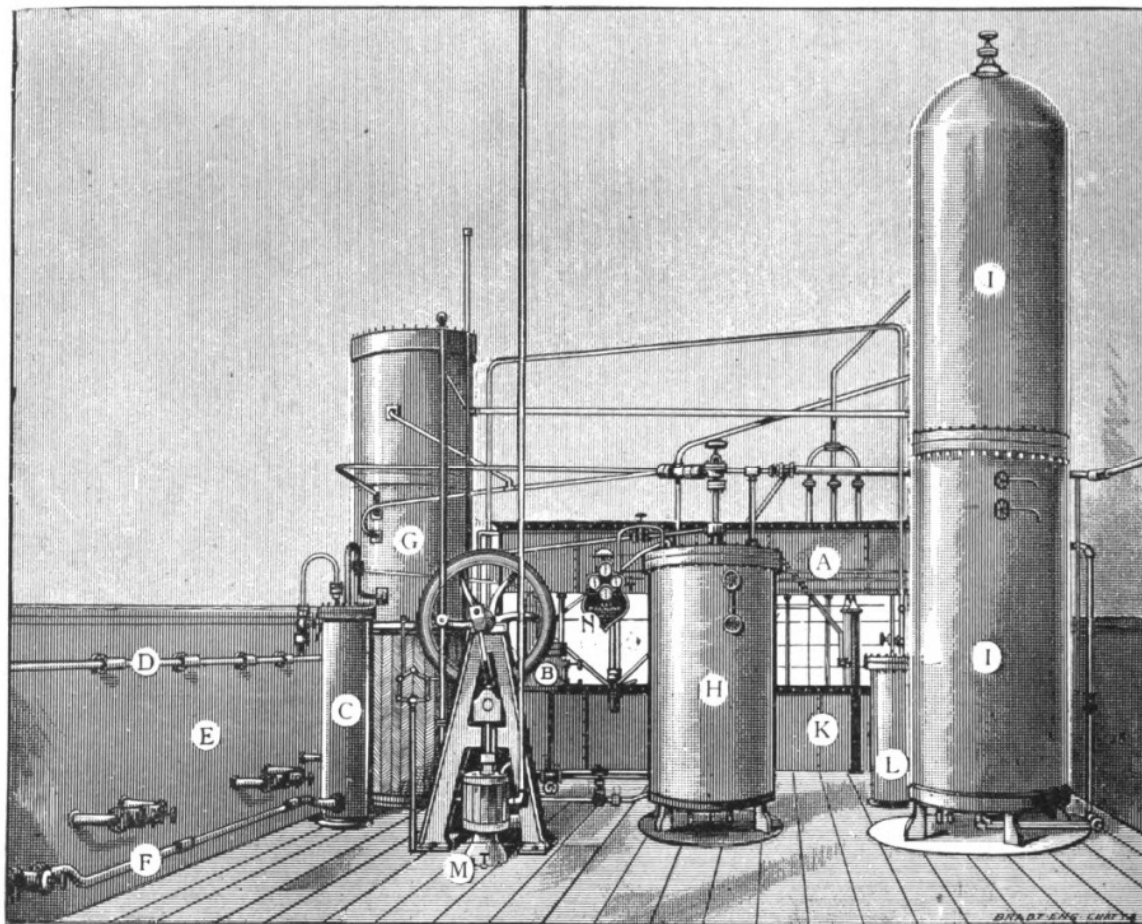
CORRESPONDENCE SOLICITED.

SOUTHERN ICE MACHINE CO.

SOLE OWNERS AND MANUFACTURERS OF

... The Latest Improved Absorption ...

ICE AND REFRIGERATING MACHINE.



∴ THE SOUTHERN ∴



The SOUTHERN ICE AND REFRIGERATING MACHINE is one of the best and has been acknowledged by the most experienced ice manufacturers to work more economical and produce ice cheaper and of a better quality than any other machine on the market to-day



ALL MACHINES NOW IN OPERATION ARE GIVING PERFECT SATISFACTION.



FOR ESTIMATES AND
FURTHER PARTICULARS
ADDRESS THE

SOUTHERN ICE MACHINE CO.
CHATTANOOGA, TENN.

THE WESTERN ICE MACHINE CO.



OTTO HOFFMANN, PROPRIETOR.

Ice ~~and~~ Refrigerating Machinery

FOR BREWERIES, PACKING HOUSES, ICE FACTORIES,
COLD STORAGE PLANTS, MARKETS, CONFECTIONERS, ETC.



Every Part Accessible While in Motion.
The Most Cooling with the Least Expense.

THIS machine is the simplest, cheapest in first cost and after expense, is more easily handled than any other, and takes less room. Absolutely no possibility of leaking Ammonia. Machines of any capacity from smallest to the largest. We would be pleased to make Estimates, and believe we can show you a saving in cooling your cellars.

WESTERN ICE MACHINE Co.

Office, Room 605 Northern Office Building, Cor. La Salle and Lake Sts.,

CHICAGO, ILL.

See this space next issue for illustration of Machine.

ICE MACHINES

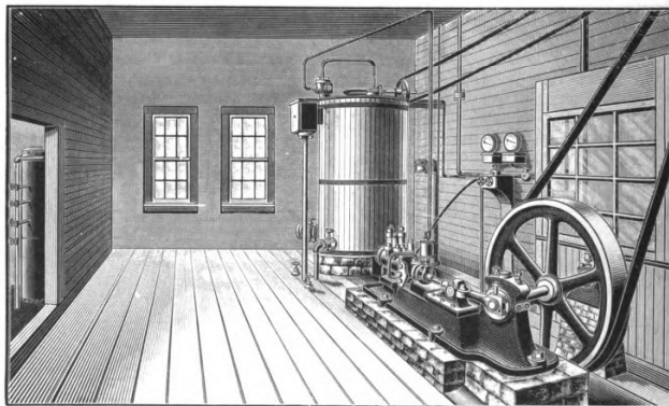
(WINDHAUSEN'S SYSTEM.)

AINSLIE, COCHRAN & CO.

LOUISVILLE, KY.

To the Trade

We have recently secured the sole right to manufacture and sell WINDHAUSEN'S CARBONIC ANHYDRIDE ICE AND REFRIGERATING MACHINES in the United States. These machines have gained a wide reputation on the continent for their simplicity, durability and economical running. They have been indorsed by the German government, an eighty (80) ton machine having been placed in the powder works at Spandau. They are also fast superseding other systems in the prominent breweries of Germany, nearly 200 being in operation already. They are the only machines using carbonic anhydride, which has such a great range of expansion, produces such intense cold, and is cheap, odorless and easily obtained.



The above cut represents the No. 2 Machine at the Terre Haute House, Terre Haute, Ind.

WRITE TO US FOR FURTHER PARTICULARS.

AINSLIE, COCHRAN & CO.



REFRIGERATING PLANTS

THE PONTIFEX ICE MACHINE COMPANY,

ROBERT HEWITT, President, 512 West Street, NEW YORK CITY,

ARE PREPARED TO CONTRACT FOR

Ice and Refrigerating Plants of any magnitude, under the Reece, Stanley, Pontifex-Wood and Hendrick systems (Refrigerant, Aqua Ammonia) as constructed under special arrangement with this Company by

THE HENDRICK MANUFACTURING COMPANY, LIMITED, CARBONDALE, PA.

The **PONTIFEX-HENDRICK** Ice and Refrigerating Machine is the result of more than fifteen years' experience in such work on the part of Messrs. Pontifex and Wood, Farrington Works, London, the original builders of the machine in Great Britain and its Colonies, and of the Pontifex Ice Machine Company, American builders, who have somewhat modified the machine to better adapt it for American refrigerating practice. **A Simple, Strong, Durable, Reliable, Economical and Efficient Machine**, particularly adapted for low temperature work, such as the refrigeration of Paraffine Works, Oil Refineries, Freezing and Cold Storage Warehouses, Fish Freezing Houses, Chemical Works, etc. In successful use in **47 Ice Factories** in tropical countries. Over **350 machines** in successful operation in Freezing and Cold Storage Warehouses, Breweries, Distilleries, Wineries, Packing Houses, Abattoirs, Dressed Beef Houses and Markets, Dairies and Creameries, Buttery Factories, Yeast Factories, Chocolate and Candy Factories, Hotels and Restaurants, Paraffine and Cotton Seed Oil Refineries, Lard Refineries, Powder and Dynamite Mills. Machines built from **2½ to 100 tons** daily refrigerating capacity. Machines guaranteed for material, workmanship and capacity under test. For descriptive circulars, references, detailed specifications, apply either to

THE PONTIFEX ICE MACHINE COMPANY, OR THE HENDRICK MANUFACTURING CO., Ltd.
512 West Street, NEW YORK. CARBONDALE, PA.

CASTLE ICE MACHINERY CO.

MANUFACTURERS OF

INDIANAPOLIS, IND.

Absorption Ice and Refrigerating Machines

For all purposes, containing latest improvements, making **REGULAR** that which before was **NOT** regular. Our 15-ton Absorber contains over 6,000 square feet of absorbing surfaces, enabling the temperature of absorption to vary from 50 to 110 deg. Fahr. without affecting operations. One foundation for all machinery. Small water consumption. Economical and positive. The machines in use: We refer to Seymour Ice Co. (Ind.) having machine with all improvements.

MAKE YOUR EXHAUST STEAM PRODUCE SILVER DOLLARS

By using it through our New Designed Machine with improvements for Refrigerating, Cold Storage or Ice Making, from 50 lbs. to 3 tons. Using either live or exhaust steam. With non-explosive retort. Automatic. Can be arranged to operate 12 hours each day and perform excellent duty. No extra help required.

CIRCULARS AND ESTIMATES ON APPLICATION.

THE CASE — REFRIGERATING MACHINE CO.

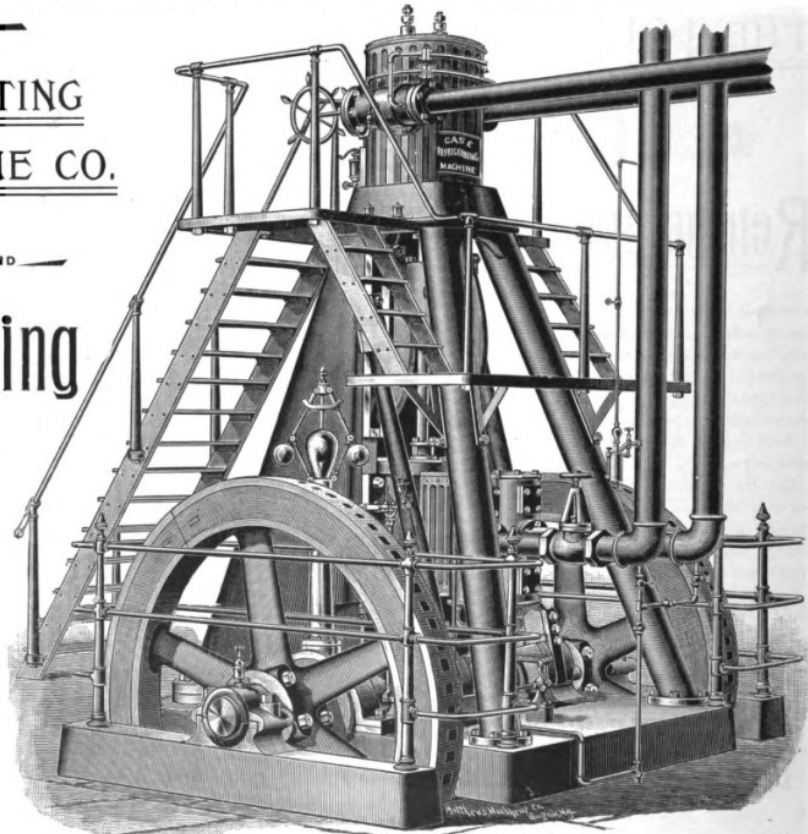
BUILDERS
OF . . . ICE AND —

Refrigerating ..MACHINES..

FOR ICE MAKING
AND ARTIFICIAL
REFRIGERATING

Full particulars, Estimates, Illustrated Circular, containing list of machines in use, etc., furnished upon application.

BUFFALO, N. Y.



PLANS AND SPECIFICATIONS



..... FURNISHED FOR.....

COLD STORAGE HOUSES
ICE AND REFRIGERATING PLANTS

ICE FACTORIES, ETC.



OTTO C. WOLF
Engineer and
Architect
NORTHEAST CORNER OF
BROAD AND ARCH STREETS
PHILADELPHIA

Branch Office:
543 FIFTH AVE. NEW YORK.

PLANS AND SPECIFICATIONS FURNISHED
FOR ALL ESTABLISHMENTS REQUIRING



ARTIFICIAL REFRIGERATION

COLUMBUS IRON WORKS Absorption Ice Machine

IMPROVED

SUCCESSORS TO
H. D. STRATTON & CO.

Established 1853.
Incorporated 1856.

W. R. BROWN, President.
W. COOK, Superintendent.

Machines from 5 to 33 tons' capacity per 24 hours, or larger if desired.

94 Machines Built

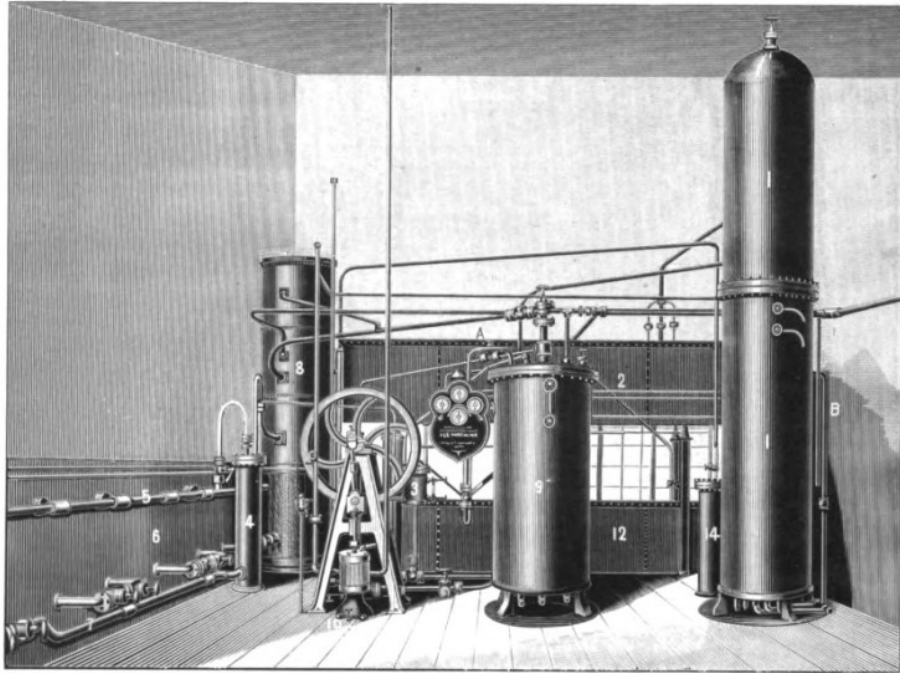
and all in successful operation.

More Ice Making Machines sold in the South than by any other establishment.

No expensive building required. No pressure on machine when stopped.

Send for price list and illustrated circular with location of machines.

This establishment was the first to turn out a perfect and complete Ice Machine, and has been in the business 21 years, constantly manufacturing and improving, and are prepared to furnish the most reliable and economical machine in the market.

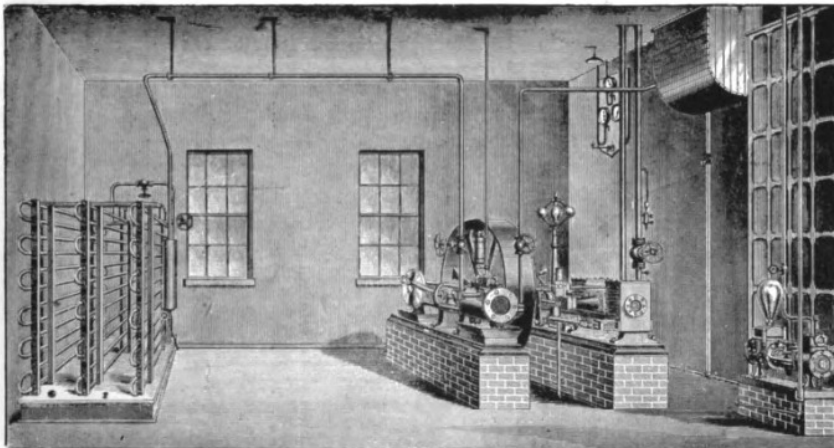


BUILT BY THE **COLUMBUS IRON WORKS CO., COLUMBUS, GA.**

The American Ice Machine Company

SOLE OWNERS OF THE
KLINE AND WINKLER AUTOMATIC

REFRIGERATING AND ICE MAKING MACHINE SYSTEM



Simplicity of Construction,
Durability,
Efficiency,
Economy.

ICE-MAKING OR REFRIGERATING PLANTS

From One Ton to Two Hundred Tons daily capacity.

Over 100 MACHINES IN OPERATION.

1. The simplicity of construction. Every part is simple and complete, is exposed to full view, easily got at and can be readily understood and handled by an engineer of ordinary intelligence.
2. The freezing process is completely automatic (WHICH NO OTHER FREEZING SYSTEM POSSESSES), through the action of our patent evaporation pressure regulator: It saves valuable working time. Every part is independent of the other, and can be overhauled or replaced without stopping the whole machine.
3. That ice is manufactured from distilled water, which is free from disease-producing germs, such as abound in ice frozen on rivers and ponds, is chemically pure, and is infinitely preferable to the natural product.

4. Our Patent Gas Condenser enables us to work with warmer water and less water than any other machine, as the water is applied DIRECT on the hot pipe without waste or slop on the surroundings.
5. We can make more ice or cold air than any other machine, WITH THE SAME AMOUNT OF FUEL. Experts have placed the difference in our favor at not less than 25 degrees.
6. The Condensers and Freezers will not stop on account of sediment. They never require cleaning. They clean themselves while at work without separate attachment. Our freezing coils are so constructed that no pipe joint is used inside of the tank, and each coil is independent of the other. Each coil section can be taken out while working without interference with the other sections.

Company's Offices, 35 Broadway, Rooms 72, 73, 74 and 75, New York.

The Improved Pontifex-Wood Machine

A MOST ECONOMICAL AND RELIABLE APPARATUS,

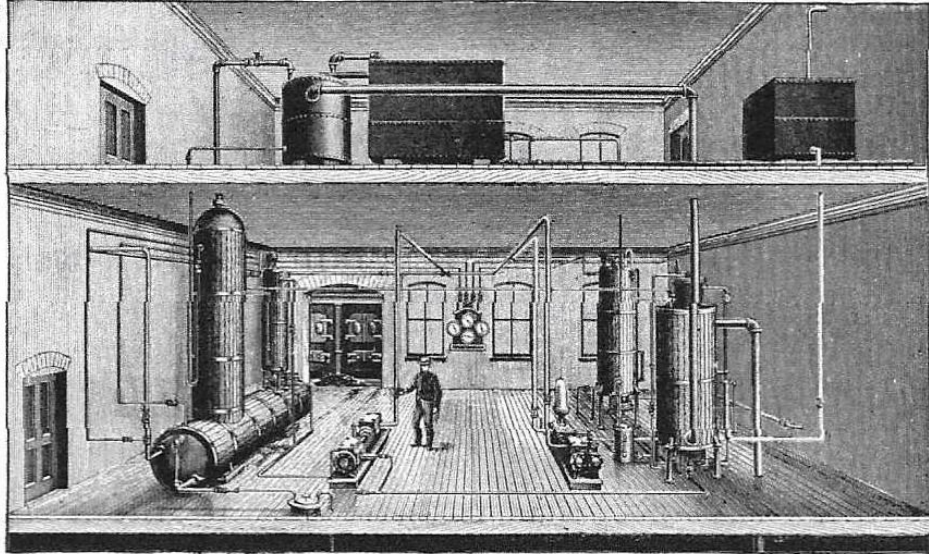
Adapted to all classes of Refrigeration, especially where extremely low temperatures are required.

ALSO FOR
MAKING
... ICE

UPWARDS OF
400
MACHINES IN OPERATION.

H. J. W. S. COOKE,
Patente.

ESTIMATES FURNISHED.
SEND FOR CIRCULARS.



ISBELL-PORTER COMPANY, BUILDERS,

OFFICES

245 BROADWAY, NEW YORK. 46 BRIDGE STREET, NEWARK, N. J.

THE KRAUSCH IMPROVED STANDARD

THEO. KRAUSCH,
President.

JOHN KRAUSCH,
Secretary.

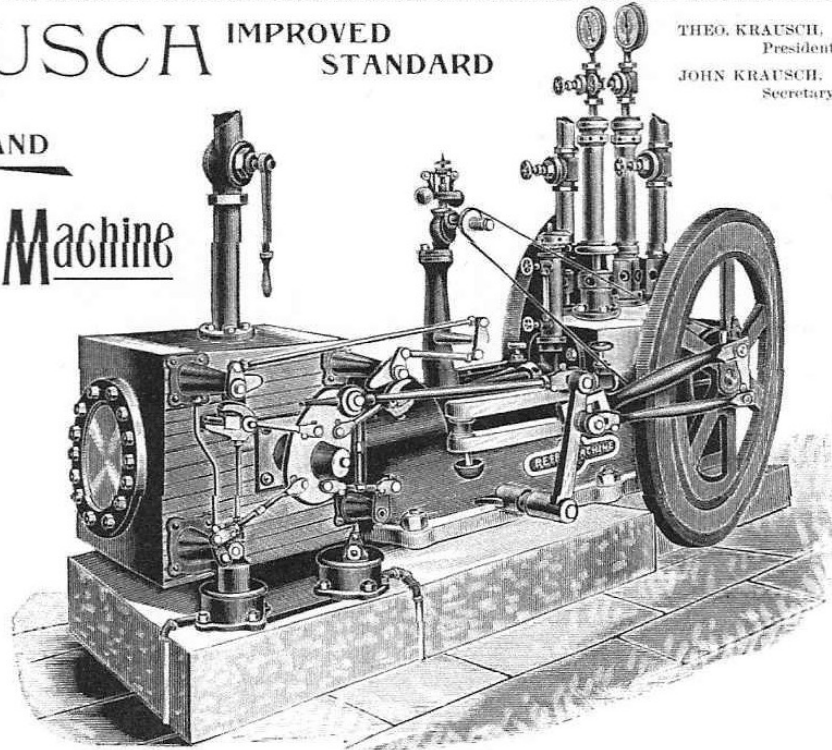
☀ **ICE AND**
Refrigeration Machine

Is original, horizontal, simple, strong, double acting, central, and is provided with the Corliss Valve Gear. It is most economical in fuel, water and space. Its refrigeration capacity is unsurpassed. Machines are in operation for 10 years without need of repairs, but ordinary wear and tear.

Our machines are guaranteed for years. Plants are erected for Packing Houses, Breweries, Oil Refineries, Cold Storage, Market Houses, Butcher Shops, Hotels and Ice Making.

PRICES ARE MODERATE.

ALL KINDS
ARCHITECTURAL PLANS
FURNISHED.



THE THEO. KRAUSCH CO.

122 E. UTICA STREET, BUFFALO, NEW YORK.

❁ PICTET ❁

Ice ^{and} Refrigerating Machine

...MANUFACTURED BY...

WHITEHILL ENGINE ^{AND} PICTET ICE MACHINE CO.

WE DO NOT USE AMMONIA.

Pictet Machines use **Anhydrous Sulphurous Oxide**, a chemical noted for its low working pressure, is of itself a lubricant, and does not injure any of the metals: its low pressure is a guarantee against explosion.



NEW YORK BOARD OF FIRE UNDERWRITERS.

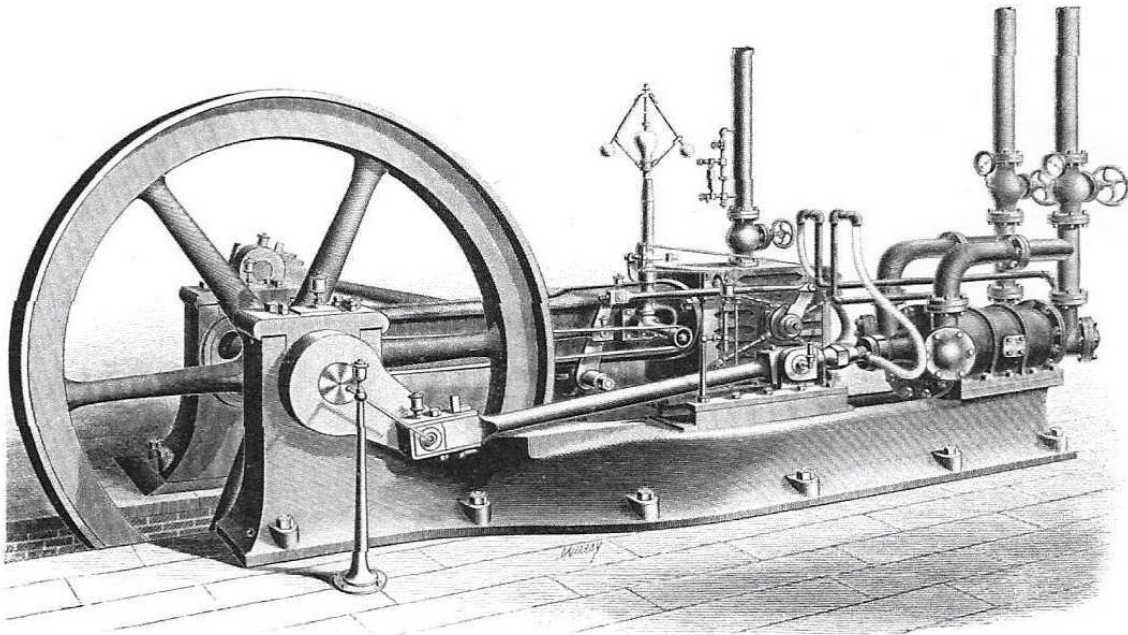
BUREAU OF SURVEYS

JAMES HARRISON, Supt.
Boreel Building, 15 Broadway, Room 31.

NEW YORK, January 21, 1891.

THE PICTET ARTIFICIAL ICE CO. (Limited), New York:
 Dear Sirs: Your favor of the 23d inst. is at hand. In reply, the examination of our expert and his subsequent report were convincing that the article known as Anhydrous Sulphurous Oxide is a safe article for storage or shipment, its tendency being to extinguish rather than to cause fire.

Yours truly, JAMES HARRISON, Supt.



Working Pressure from 50 to 75 lbs.

❁ We guarantee GREATER ECONOMY OF FUEL, doing the same amount of work with less coal than any machine in the market. ❁

FOR LIST OF REFERENCES AND FURTHER PARTICULARS, ADDRESS

WHITEHILL ENGINE ^{AND} PICTET ICE MACHINE CO.

WORKS: NEWBURGH, N. Y.

New York Office, 21 Cortlandt St., Room 6.

FRICK COMPANY

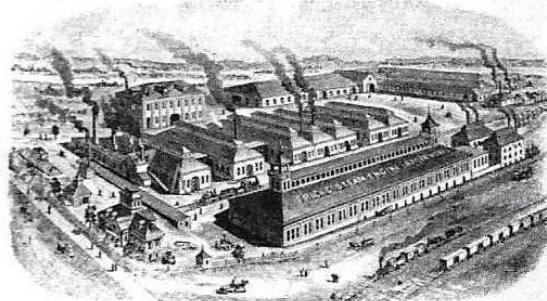
ENGINEERS.

WAYNESBORO, FRANKLIN COUNTY, PA., U. S. A.

INCORPORATED 1885.

JOSEPH FRICK, President.
SAMUEL HOFFMANN, Vice-Pres.
E. B. STRICKLER, Treasurer.
EZRA FRICK, Secretary.
EDGAR PENNEY, M. E., Gen. Sup.

ESTABLISHED 1853.



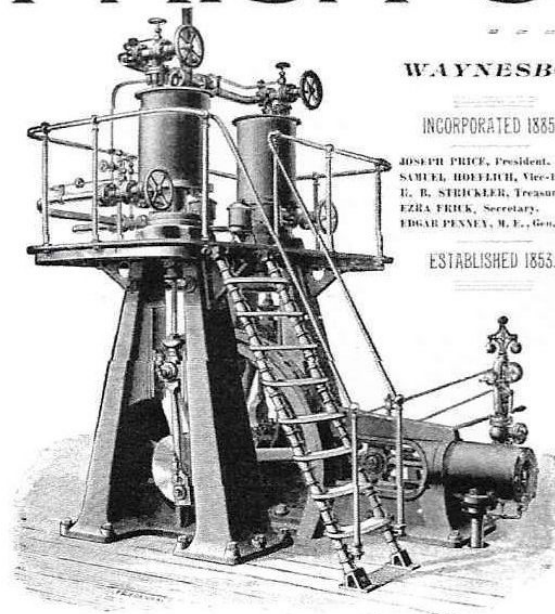
MAIN WORKS AND GENERAL OFFICES: WAYNESBORO, PA.

CAPITAL \$1,000,000.

MANUFACTURERS OF THE

ECLIPSE

Ice Making & Refrigerating Machines.



5-Ton Machine.

SEND FOR OUR NEW CATALOGUE, 1890.

A Few References:

BREWERIES. Refrigerating

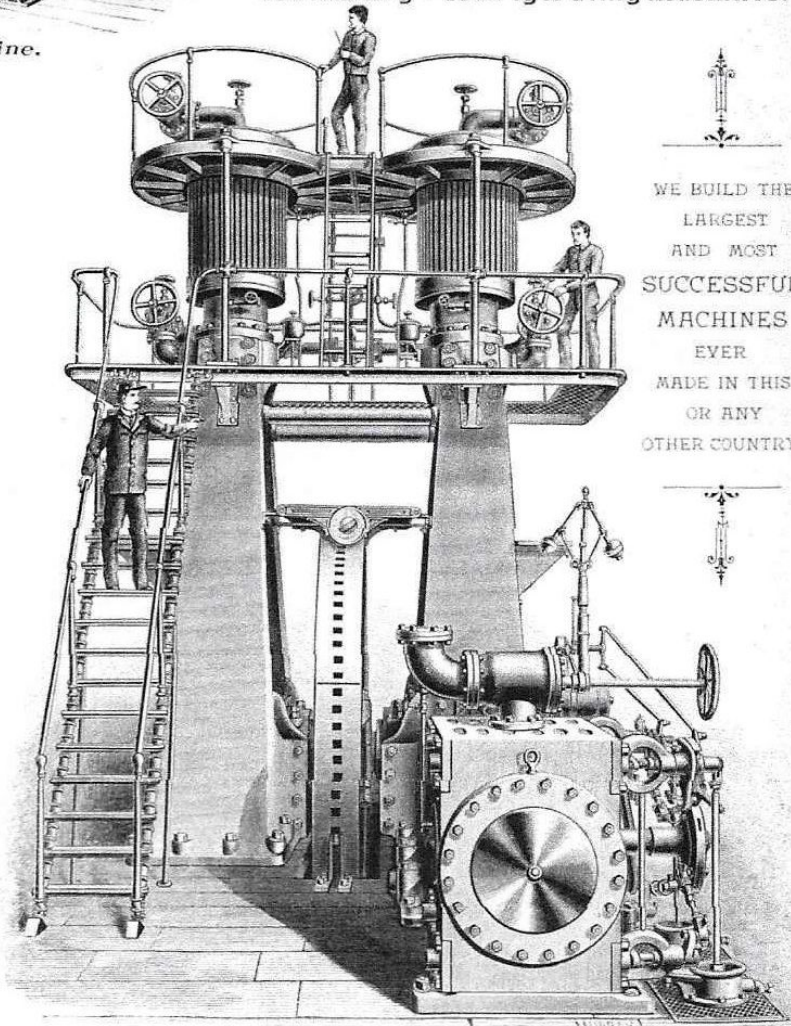
	Tons
Phoenix Brg. Co., Baltimore, Md.	27
Gipps Brg. Co., Peoria, Ill.	50
Sprattler & Mennell, Paterson, N. J.	32
Herman Lackman, Cincinnati	65
Henry Plink, Harrisburg, Pa.	32
Schastian Helldorfer, Baltimore, Md.	32
Frank Reich & Bros., Springfield, Ill.	50
Jos. Stein & Co., Louisville, Ky.	23
Meyer & Reidlun, Covington, Ky.	32
Parkersburg Brg. Co., Parkersburg, W. Va.	27
Bellevue Brg. Co., Cincinnati, O.	50
Cumberland Brg. Co., Cumberland, Md.	27
D. Lutz & Son, Allegheny, Pa.	50
Herman Lackman, Cincinnati (all orders)	80

PACKING AND COLD STORAGE.

J. C. Shafer & Co., Baltimore	40
G. Cassard & Sons, Baltimore	25
Baltimore City Storage Co., Baltimore	32
Armour Packing Co., Kansas City	100
Shallcross & Son, Coatesville, Pa.	15
Washington Market Co., Washington, D. C.	32
Armour Packing Co., Kansas City (all orders)	150
Francis Whittaker & Sons, Wichita, Kas.	150
Emil Winters, Pittsburg, Pa.	37
Frank Seifrid, Louisville, Ky.	7
Chicago Packing & Provision Co., Chicago	150
Chicago Packing & Provision Co., Chicago (second order)	150
Steeleton Store Co., Steeleton, Pa.	10
Pittsburg Meat Supply Co., Allegheny, Pa.	50
J. Vogle & Son, Cincinnati	50
John C. Hately, Chicago	65
G. H. Hammond & Co., Hammond, Ind.	150
G. H. Hammond & Co., Omaha, Neb.	150
Calumet Canning Co., Hammond, Ind.	32
West Chester Cold Stor. Co., W. Chester, Pa.	40
Chautauqua Lake Ice Co., Pittsburg, Pa.	20

ICE FACTORIES.

	Tons
F. L. Ellis & Co., Hopkinsville, Ky.	10
Consumer Ice Co., New Orleans, La.	100
Little Rock Ice Co., Little Rock, Ark.	35
Owensboro Ice & Cold Stor. Co., Oshoto, Ky.	20
W. S. Linton, Jacksonville, Ill.	15
Pulaski Ice Co., Pulaski, Tenn.	5
Armour Packing Co., Kansas City	75
Ewing & Beall, Uniontown, Pa.	15
S. W. Hill, Allegheny, Pa.	18
Chautauqua Lake Ice Co., Pittsburg	40
Chautauqua Lake Ice Co., Pittsburg (2d order)	40
West Chester Ice Co., West Chester, Pa.	15
Steeleton Store Co., Steeleton, Pa.	2
Parkersburg Brg. Co., Parkersburg, W. Va.	30
Cumberland Brg. Co., Cumberland, Md.	8
Hagerstown Ice Co., Hagerstown, Md.	20
Alberto Malo, City of Mexico, Mex.	25
Germantown Ice Co., Germantown, Pa.	20
Bryn Mawr Hotel Co., Bryn Mawr, Pa.	20
Geo. S. Sexton & Co., Wytheville, Va.	5
Cambridge Ice Co., Cambridge, Md.	10

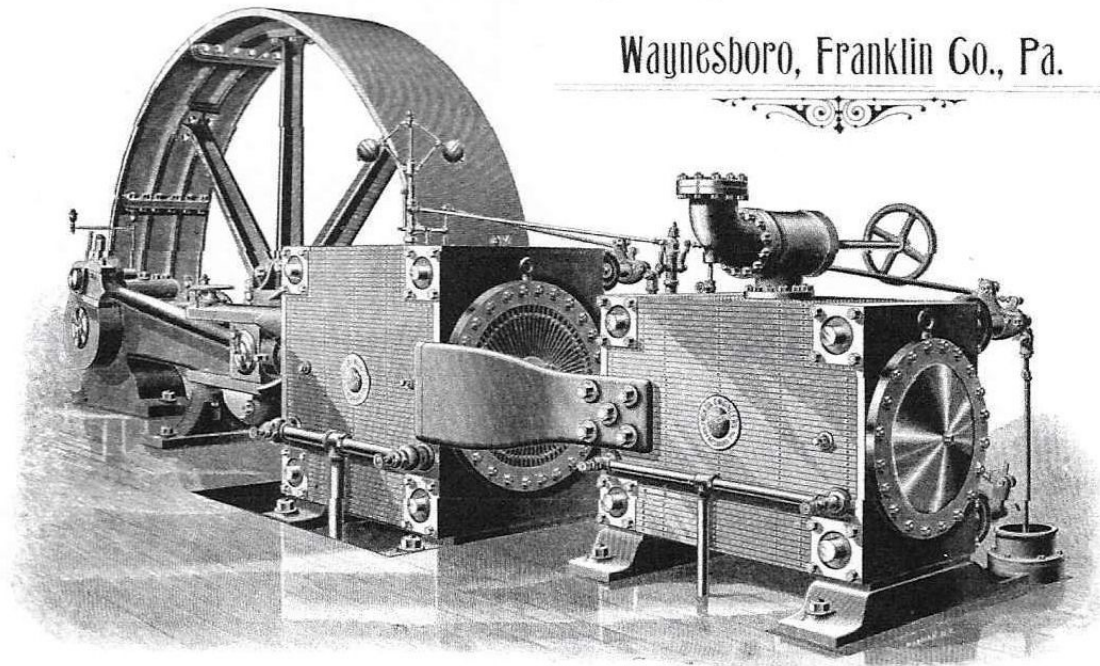


150-Ton Machine. Weight, 193,250 Pounds.

WE BUILD THE
LARGEST
AND MOST
SUCCESSFUL
MACHINES
EVER
MADE IN THIS
OR ANY
OTHER COUNTRY.

FRICK COMPANY, ENGINEERS,

Waynesboro, Franklin Co., Pa.



A GENUINE CORLISS ENGINE WITH ALL THE LATEST IMPROVEMENTS.

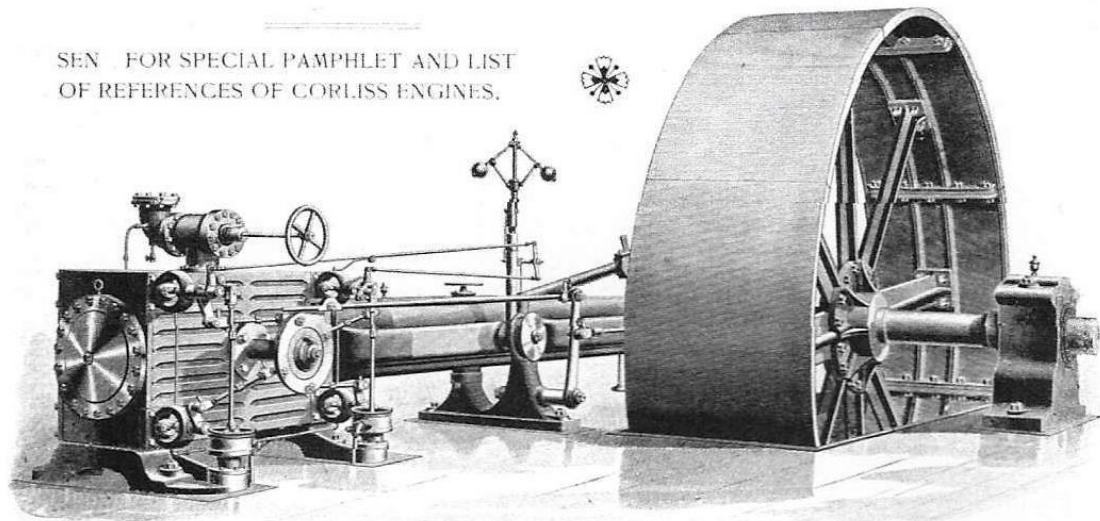
"ECLIPSE" CORLISS TANDEM COMPOUND CONDENSING ENGINE

UP TO 3000 HORSE POWER

We have complete line of patterns and build Corliss Horizontal Stationary Engines, Corliss Vertical Engines, Condensing or Non-Condensing, Single or in Pairs. Corliss Compound Engines, Tandem or Cross Compound. Corliss Engines for any service, 40 to 3000 horse power, in a single engine.

SPECIAL NOTICE—With our Corliss Engine we contract for fitting up complete the entire Steam Plants including Steam Boiler, Feed Water Heater, Feed Pumps, Piping, Shafting, and all the appurtenances and belongings peculiar to a first-class job.

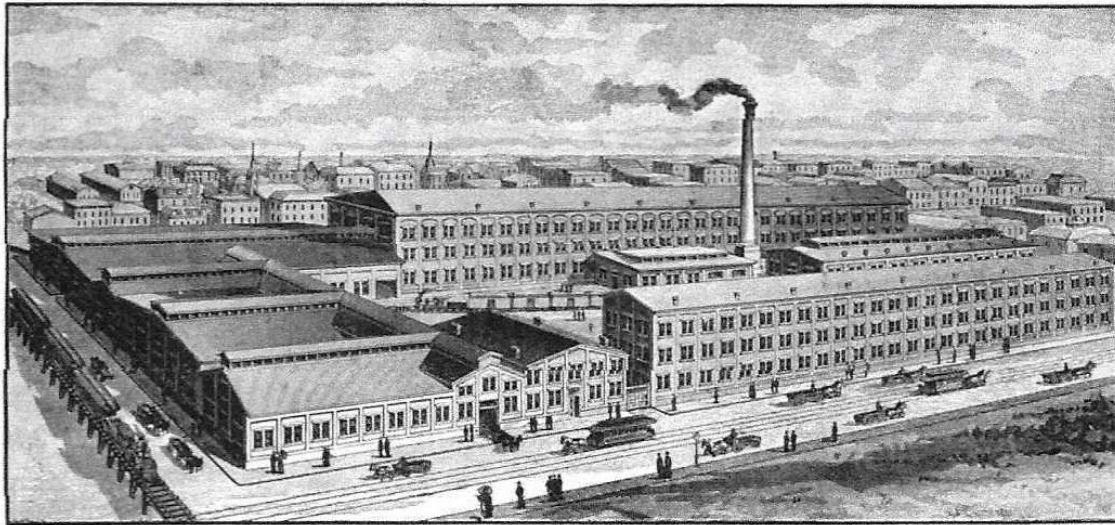
SEND FOR SPECIAL PAMPHLET AND LIST OF REFERENCES OF CORLISS ENGINES.



1000-HORSE POWER "ECLIPSE" PLAIN CORLISS ENGINE.

THIS ENGRAVING REPRESENTS THE WORKS OF THE Blymyer Ice Machine Co., Cincinnati, Ohio.

Manufacturers of Ice and Refrigerating Machines, exclusively. The Absorption Machine, made by the Blymyer Ice Machine Co., is superior to any Compression Machine, either as a Refrigerating or Ice-Making Machine. It requires no steam engine or complex moving machinery. It saves 25 to 40 per cent of the fuel, and saves ammonia and labor. The cost of repairs is small, and the machine will outlast Compression Machines several times over. It is not necessary to buy these machines in pairs, as there is no danger of serious stoppage. These machines are **RADICALLY DIFFERENT** from all other Absorption Machines, and are in every way superior to them.



BELOW will be found a list of Ice-Making and Refrigerating Machines made by us. Every one of these machines has been in continuous use since erected, and is in use now. None have failed to fill their guarantees satisfactorily; none have been superseded by other machines. The entire capacity of our works having, up to the present time, been taken up with the manufacture of Ice-Making Machines, no agents have solicited orders for Refrigerators. Such orders as have been taken have been merely incidental. Having easily taken the lead in the Ice-Making Machine field, the manufacturers, with their enlarged capacity, will now enter the Refrigerator field (which is much the easier of the two in which to make a good record in earnest, and respectfully solicit correspondence. Send for our catalogue.

ICE-MAKING MACHINES.

No.	Size.	NAME.	ADDRESS.
1	8 Ton.	Meridian Ice Mfg. Co.	Meridian, Miss.
1	10	Baton Rouge Ice Mfg. Co.	Baton Rouge, La.
1	15	Evansville Ice and Cold Storage Co.	Evansville, Ind.
1	5	A. Moresi	Jeanerette, La.
1	15	Lookout Ice and Cold Storage Co.	Chattanooga, Tenn.
1	10	Morris Ice Co.	Jackson, Miss.
1	15	Texarkana Ice Co.	Texarkana, Tex.
1	20	Lookout Ice & Cold Stor. Co. (2d Order)	Chattanooga, Tenn.
1	5	Gadsden Ice Co.	Gadsden, Ala.
1	6	Sheffield Ice Co.	Sheffield, Ala.
1	20	Decatur Ice Co.	Decatur, Ala.
1	30	Crystal Ice Co.	Wichita, Kan.
1	3	Denton Ice Co.	Denton, Tex.
1	5	Van Buren Ice and Coal Co.	Van Buren, Ark.
1	5	Biloxi Artesian Ice Mfg. Co.	Biloxi, Miss.
1	25	Hutchinson Ice Mfg. Co.	Hutchinson, Kan.
1	12	Parkersburg Ice Co.	Parkersburg, W. Va.
1	30	Union Ice Co.	Dorver, Col.
1	3	Dominick & Karston.	West Point, Miss.
1	3	DeCoppet Ice Co.	Somerset, Ky.
1	35	Evansville Ice & Cold Stor. Co. (2d Order)	Evansville, Ind.
1	2	Van Hora & Chambers.	Lebanon, Ohio.
1	4	John C. Webb.	Dempopolis, Ala.
1	12	Huntington Ice and Storage Co.	Huntington, W. Va.
1	15	Gorrville Artificial Ice Co.	Cincinnati, Ohio.
1	3	Tupelo Ice Co.	Tupelo, Miss.
1	30	Wheeling Ice and Storage Co.	Wheeling, W. Va.
1	10	Fl. Payne Ice and Cold Storage Co.	Fl. Payne, Mo.
1	10	Coronado Beach Co. Hotel del Coronado	San Diego, Cal.
1	1	Walter Aiken Hamilton Hotel	Hamilton, Bermuda
1	20	Decatur Cold Storage and Ice Co.	Decatur, Ill.
1	12	Marietta Ice Co.	Marietta, O.
1	35	Dayton Ice Mfg. & Cold Storage Co.	Dayton, O.
1	30	Zanesville Artificial Ice Co.	Zanesville, O.
1	35	Evansville Ice & Cold Stor. Co. (3d Order)	Evansville, Ind.
1	3	Gonnelly & Curtis.	Columbus, Miss.
1	5	Lebanon Artificial Ice Co.	Lebanon, Ky.
1	5	Cynthiana Elec. Light & Power Co.	Cynthiana, Ky.
1	5	Grenada Cream'y. Cold Stor. & Ice Co.	Grenada, Miss.
1	15	Washington Ice Co.	Washington, Ind.
1	30	Wheeling Ice & Storage Co. (2d Order)	Wheeling, W. Va.
1	32	Consumers Ice Co.	San Francisco, Cal.
1	15	Shelbyville Artificial Ice Co.	Shelbyville, Ind.
1	30	Pueblo Distilled Water Ice and Cold Storage Co.	Pueblo, Col.
1	15	Skinner & Olson	Topeka, Kan.
1	35	Port Wayne Artificial Ice Co.	Port Wayne, Ind.
1	35	Evansville Ice & Cold Stor. Co. (4th Order)	Evansville, Ind.
1	35	Dayton Ice Mfg. & Cold Stor. Co. (2d Order)	Dayton, O.
1	15	Ashland Artificial Ice Co.	Ashland, Ky.
1	50	Gorrville Artificial Ice Co. (2d Order)	Cincinnati, O.

* These machines were erected in 1890.

ICE-MAKING MACHINES.

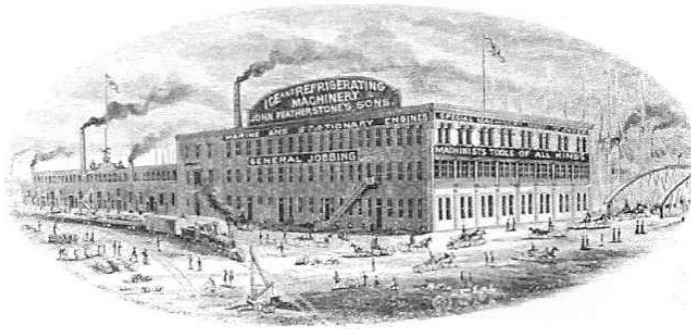
No.	Size.	NAME.	ADDRESS.
**1	8 Ton.	Gibson House	Cincinnati, O.
**1	10	Palace Hotel	San Francisco, Cal.
**1	30	The People's Ice Co.	Birmingham, Ala.
**1	35	Citizens Ice Co.	Los Angeles, Cal.
**1	20	Civil & White	Colorado Springs, Col.
**1	30	Pueblo D. W. Ice & Cold Stor. Co. (2d Order)	Pueblo, Col.
**1	60	Colorado Ice and Storage Co.	Denver, Col.
**1	25	E. B. Cornbl	Tampa, Fla.
**1	5	Mc. J. G. Mays	Bessemer, Ala.
**1	20	Consumers Ice Co.	Vicksburg, Miss.
**1	35	Artificial Ice and Storage Co.	Canton, O.
**1	12 1/2	Frigid Ice Mfg. Co.	Joplin, Mo.
**1	30	Crystal Ice Co.	Abnquerque, N. M.
**1	15	Meridian Ice Co. (2d Order)	Meridian, Miss.
**1	5	Dayton Ice Co.	Dayton, Tenn.
**1	15	Decatur Ice Co. (2d Order)	Decatur, Ala.
**1	12 1/2	The Ruddick Artificial Ice Co.	Columbus, Ind.
**1	10	Mr. August Erath	New Iberia, La.
**1	55	The Crystal Ice Mfg. & Cold Stor. Co.	Columbus, O.
**1	32	Consumers Ice Co. (2d Order)	San Francisco, Cal.
**1	15	Peru Ice and Cold Storage Co.	Peru, Ind.
**1	55	The Crystal Ice Mfg. and Cold Stor. Co. (2d Order)	Columbus, O.
**1	32	Lafayette Artificial Ice Co.	Lafayette, Ind.
**1	50	R. T. McDonald & Judah Hart	New Orleans, La.
**1	12	John Hoey Hollywood Hotel	Long Branch, N. J.
**1	15	Bridgeport Electric and Ice Co.	Bridgeport, Ala.
**1	5	Fleischman & Co.	Cincinnati, O.

** These machines were erected in season 1891.

REFRIGERATING MACHINES.

2	50 Ton.	Louisiana Brewing Co.	New Orleans, La.
1	40	Toledo Brewing and Malting Co.	Toledo, O.
1	40	Hudepohl & Kotte (Brewery)	Cincinnati, O.
1	50	Savannah Brewing Co.	Savannah, Ga.
1	75	Schantz & Schwind (Brewery)	Dayton, O.
1	15	John Smith's Sons (Brewery)	Youngstown, O.
1	12	Christ Diel (Brewery)	Defiance, O.
1	12	Genessee Oil Works	Buffalo, N. Y.
1	12	S. Davis, Jr., & Co. (Packers)	Cincinnati, O.
1	50	Occidental Packing & Provision Co.	Lincoln, Neb.
1	15	Thos. McFadden, Jr. Cold Storage	Pittsburgh, Pa.
1	15	Grocers' Supply Co. Cold Storage	Pittsburgh, Pa.
1	40	Adolph Coors (Golden Brewery)	Golden, Col.
1	20	F. Conrad Brewery	Anaheim, Cal.
1	25	The Sachs-Prudens Ale Co.	Dayton, O.

* These machines were erected in 1890.



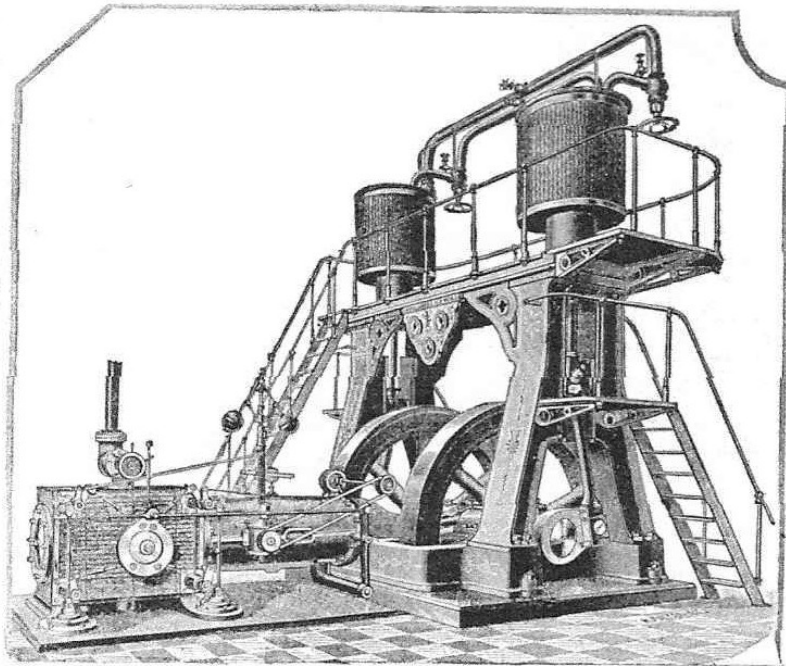
CONSOLIDATED ICE MACHINES

FOR several years past we have been engaged in building Consolidated Ice Machines, and many of the very best running in the United States, at the present time, are of our manufacture. Since the original Company have failed, we have concluded to continue this business, and hereafter will manufacture, to order, any kind or style of a Consolidated Ice Machine desired. We will also contract for complete plants, and will put in either direct or brine circulation, as may be desired. We make a specialty of furnishing duplicate parts, and keep them always in stock, and can furnish on short orders any detail of these machines. We manufacture special steel valves and white metal rings designed especially for ammonia work.

We guarantee protection against any and all claims or pretended claims for patents on these machines.

These machines are known throughout the United States for the excellence of their construction, and their superiority to all others in use. They need no better recommendation than their own work. All the material and workmanship on them is of the finest quality.

We have the original drawings and patterns in our possession, and can furnish a better machine for less money than can be built elsewhere. We also manufacture and keep on hand to supply the trade the finest steel fittings and steel valves made in the world, designed especially for ammonia work, and will be pleased to quote prices to purchasers.



NOTE.—It has come to our knowledge that parties owning or claiming to own a bogus patent, issued to one James Boyle in 1876, for an ammonia compressor, have been putting in circulation notices that the pumps used on the Consolidated Refrigerating Machines is an infringement on said patent, and that they will bring suit against any one using them; therefore we hereby guarantee to all persons purchasing one of our machines protection against said fraudulent claims, and request all persons receiving one of such notices to forward the same to us, with a statement setting forth whether they have been influenced not to buy a Consolidated Machine thereby. We also give the parties setting up these claims public notice that we will bring suit against them for damage to our business by them, by misrepresentation and fraud.

JOHN FEATHERSTONE'S SONS,

2-36 Front Street, Corner North Halsted,

—CHICAGO.

HERF & FRERICHS CHEMICAL CO. ST. LOUIS, MO.

MANUFACTURERS OF

Liquid Anhydrous Ammonia

ABSOLUTELY DRY, PURE
AND UNIFORM ALL THE
YEAR ROUND

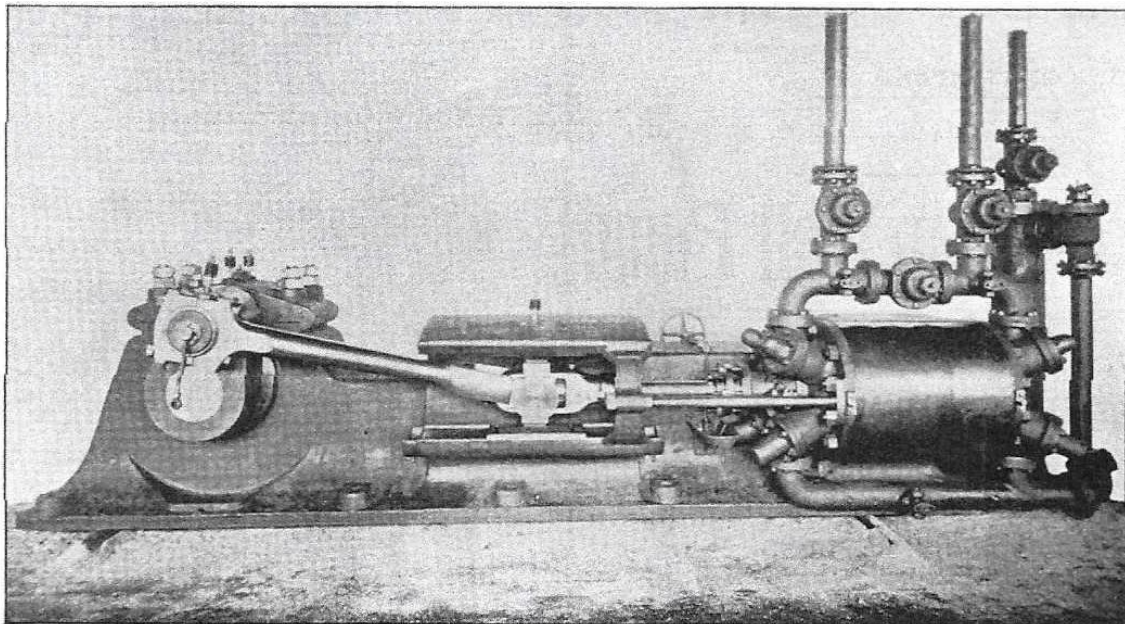


26° Ammonia



SPECIALLY PURIFIED
FOR ABSORPTION
MACHINES

All our Ammonia is made from Sulphate Ammonia only. Large capacity, best qualities and quick shipments.



No. 8 LINDE COMPRESSOR

100 TONS CAPACITY.

MANUFACTURED
BY

THE FRED. W. WOLF CO.

560 North Halsted Street, CHICAGO, ILL., U. S. A.

FOR ICE FACTORIES, COLD STORAGE HOUSES,

BREWeries AND PACKING HOUSES



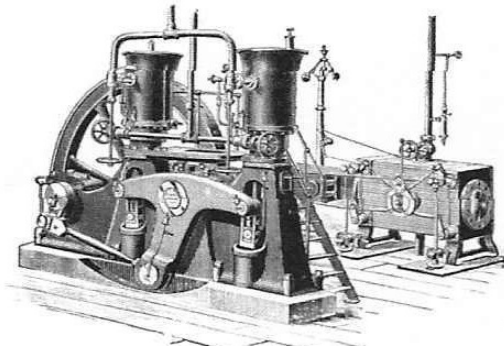
CORRESPONDENCE
SOLICITED.

OVER 1300 MACHINES IN ACTUAL OPERATION.

THE HERCULES ICE MAKING AND REFRIGERATING MACHINE

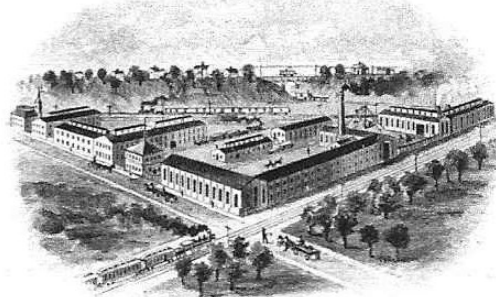
(REFRIGERANT: ANHYDROUS AMMONIA.)

FOR BREWERIES, PACKING HOUSES,
COLD STORAGE AND ICE MAKING.

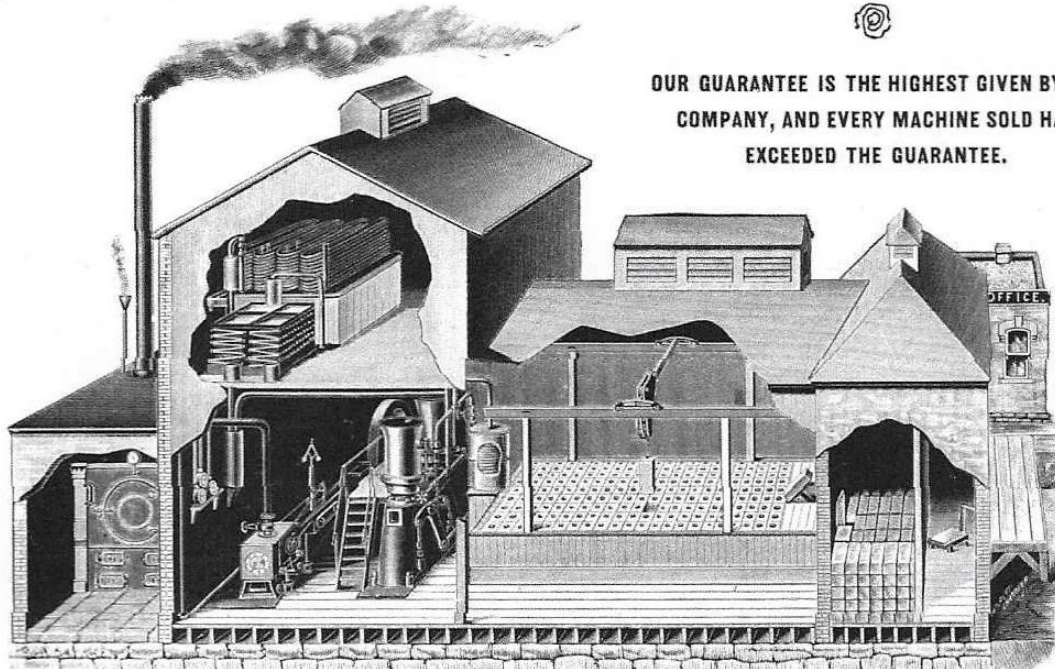


THE HERCULES ICE MACHINE.

The Hercules Ice Machine is the most compact, most economical, most easily handled, well constructed, and thoroughly satisfactory machine in the market.



HERCULES WORKS, AURORA, ILL.



THE HERCULES MODEL ICE PLANT.

OUR GUARANTEE IS THE HIGHEST GIVEN BY ANY COMPANY, AND EVERY MACHINE SOLD HAS EXCEEDED THE GUARANTEE.

A. NUNNING BREWING CO.

ST. JOSEPH, MO.

HERCULES IRON WORKS, CHICAGO, ILL. October 13, 1891.

In reply to your inquiry relating to the 40-ton Refrigerator placed by you in our brewery, I am pleased to say the machine has more than met our expectations, and your guarantee fully demonstrating its worth and reliability. It has the past year ran continuously night and day, and has not occasioned any stop for repairs of any kind, and we are greatly pleased to add our name to the long list of testimonials which the Hercules bears.

Yours respectfully,
AUG. NUNNING, President.

MEADERS & OSGOOD,

NASHVILLE, TENN.

HERCULES IRON WORKS, CHICAGO, ILL. July 29, 1891.

Our 25-ton Ice Machine purchased of you, after one month continuous operation has given such complete satisfaction that we do not wish a test of its abilities to perform the work guaranteed. It is now making with ease twenty-five tons daily of the finest ice we have ever seen, besides refrigerating our storage ice house. Congratulating you upon its good work, and wishing you the success you deserve, we are, sirs,

Yours respectfully,
MEADERS & OSGOOD.

THE HERCULES BLUE BOOK No. 1, FULL OF HELPFUL AND INTERESTING INFORMATION, IS NOW IN PRESS, AND WILL BE SENT FREE TO INTENDING PURCHASERS.

NEW YORK OFFICE,
150 BROADWAY.

THE HERCULES IRON WORKS,

WORKS,
AURORA, ILL.

Room 502 Owings Building, Dearborn and Adams Sts., CHICAGO.

THE DE LA VERGNE REFRIGERATING MACHINE CO.

MANUFACTURERS OF

Foot of East 138th Street (Port Morris.)

NEW YORK, U. S. A.



REFRIGERATING ICE MACHINES
AND ANHYDROUS AMMONIA



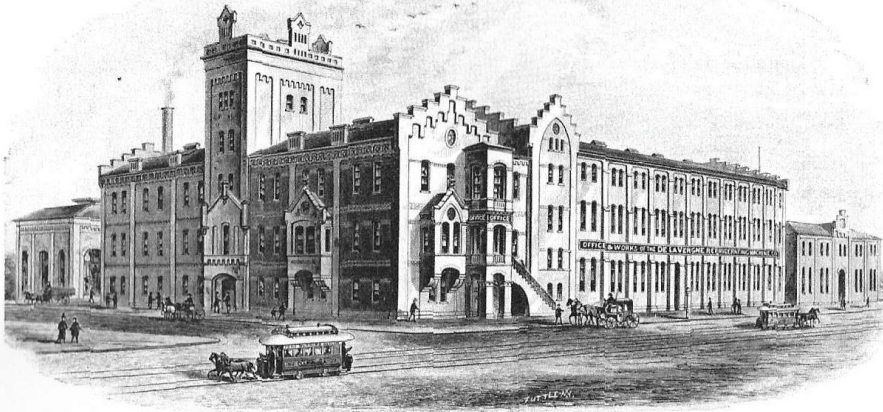
Over

360

Machines are now in Successful Operation, Representing a Total Capacity Equal to the Melting of over

18,000

Tons of Ice Per day.



Machines are used for the Cooling of

Breweries, Abattoirs and Packing Houses, Markets and Cold Storage, Hotels and Restaurants, Chemical Works, Confectioneries, and Chocolate Manufactories, Steamship Holds, Wineries, Dairies,

AND FOR THE MANUFACTURE OF ICE

A FULL DESCRIPTION OF OUR SYSTEM AND APPARATUS WILL BE SENT TO PERSONS APPLYING FOR THE SAME.

CORRESPONDENCE FROM PARTIES DESIROUS OF CONTRACTING FOR PLANS IS SOLICITED.

Estimates and Proposals will be promptly furnished free of charge as soon as the requirements are made known to us.

52

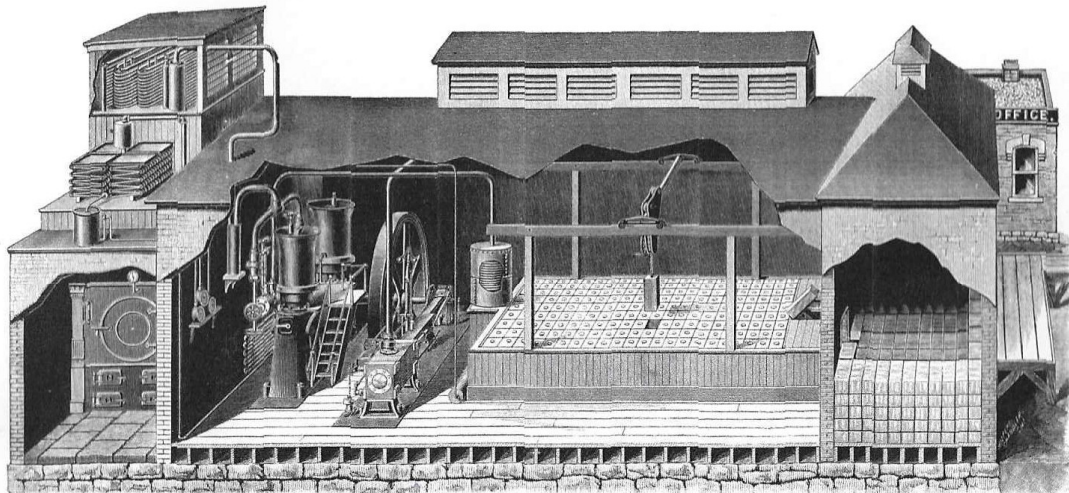
ICE AND REFRIGERATION

JULY, 1891.

HERCULES ICE AND REFRIGERATING MACHINE

(REFRIGERANT: ANHYDROUS AMMONIA.)

For Breweries, Packing Houses, Cold Storage,



A MODEL ICE PLANT.

ARTIFICIAL ICE PLANTS

STRONGEST, MOST DURABLE AND MOST ECONOMICAL MACHINE ON THE MARKET. OUR GUARANTEE IS THE HIGHEST GIVEN BY ANY COMPANY, AND EVERY MACHINE SOLD HAS EXCEEDED THE GUARANTEE. SEND FOR ILLUSTRATED CIRCULAR AND REFERENCES.

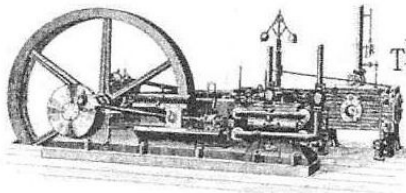
WORKS, AURORA, ILL. + THE HERCULES IRON WORKS, CHICAGO. ROOM 502 OWINGS BUILDING, DEARBORN AND ADAMS STS.

OCTOBER, 1891.

ICE AND REFRIGERATION

183

THEO. VILTER, Pres. & Sup.
ALBER. WALLBER, Vice Pres.
WM. D. VILTER, Secy. & Treas.



The **Weibel & Vilter Mfg. Co.**

Manufacturers of

CORLISS ENGINES,
Machinery for Breweries and Bottlers.

ICE MAKING & REFRIGERATING MACHINERY

ICE-MAKING PLANTS

FOR BREWERIES, PACKING HOUSES,
CONFECTIONERIES,
COLD STORAGE HOUSES, ETC.

Direct Expansion or Brine System

MILWAUKEE, WIS.

Van Winkle Gin & Machinery Co.

E. VAN WINKLE, President,
J. WALLACE BOYD, Secretary.

MANUFACTURERS OF



THE KEELING ICE MACHINE
.. AUTOMATIC ..

FOR ICE MAKING, COLD STORAGE PLANTS, BREWERIES, PACKERS, ETC.

WRITE FOR ESTIMATES AND FURTHER INFORMATION.

VAN WINKLE GIN AND MACHINERY CO.

OFFICE, 210 MARIETTA STREET, ATLANTA, GA.

ICE MACHINES

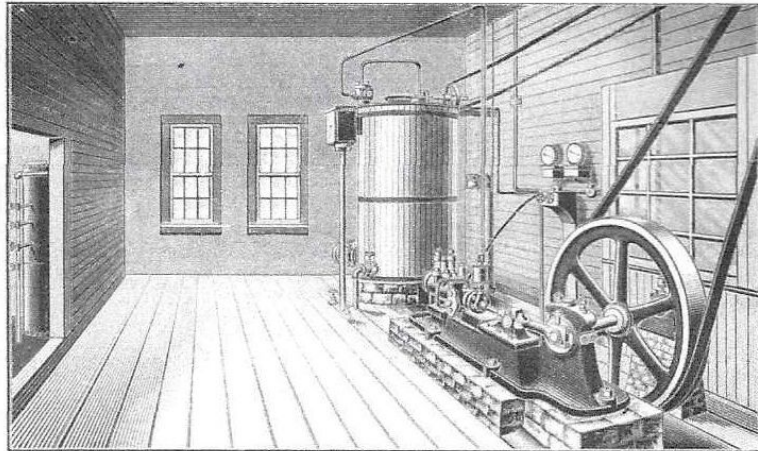
(WINDHAUSEN'S SYSTEM.)

AINSLIE, COCHRAN & CO.

LOUISVILLE, KY.

To the Trade

We have recently secured the sole right to manufacture and sell WINDHAUSEN'S CARBONIC ANHYDRIDE ICE AND REFRIGERATING MACHINES in the United States. These machines have gained a wide reputation on the continent for their simplicity, durability and economical running. They have been indorsed by the German government, an eighty (80) ton machine having been placed in the powder works at Spandau. They are also fast superseding other systems in the prominent breweries of Germany, nearly 200 being in operation already. They are the only machines using carbonic anhydride which has such a great range of expansion, produces such intense cold, and is cheap, odorless and easily obtained.



The above cut represents the No. 2 Machine at the Terre Haute House, Terre Haute, Ind.

WRITE TO US FOR FURTHER PARTICULARS.

AINSLIE, COCHRAN & CO.



REFRIGERATING PLANTS